

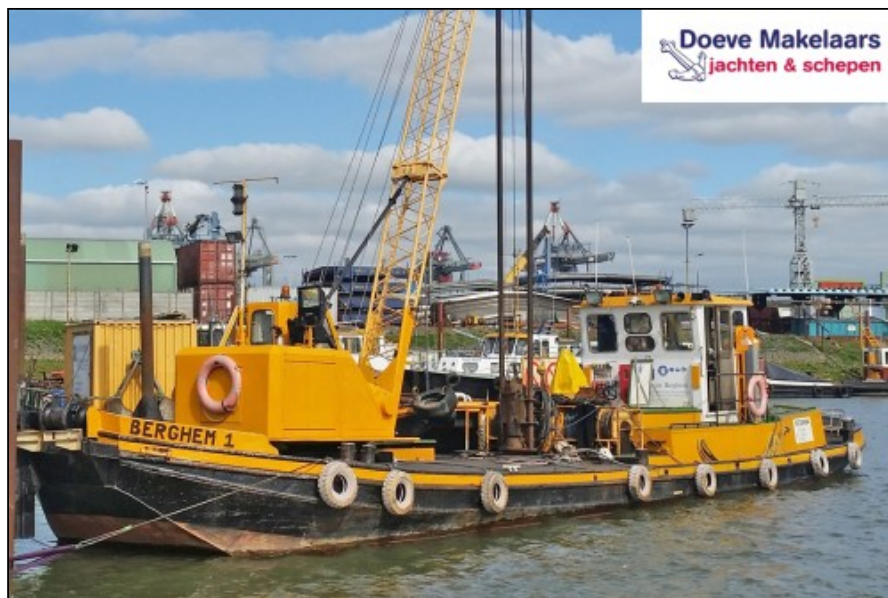
Doeve Brokers/Valuurs vof
 Sworn & EMCI Certificated Brokers
 & Valuers S&P Yachts & Ships

Westhavenkade 87c
 NL-3133 AV Vlaardingen

Phone +31 (0)10 248 98 30
 Mobile +31 (0)653 20 20 84

E-mail info@doevemakelaar.nl
 Website www.doevemakelaar.nl
www.doeve.be
www.doeve.fr

IBAN NL82 INGB 0664 0466 73
 CoC Rotterdam 24266857
 VAT NL8214.04.520.B01



Work vessel / Crane vessel with ADN

Dimensions (m)	22.05 x 4.61 x 0.99	Ref. no.	200507
Mooring	Near Rotterdam, Netherlands	Year	1920
		Material	steel

Vision Doeve Brokers

A barge converted into a floating working vessel that is fully certified for zone 2 NL and zone 3 & 4 EU. Due to the ADN certification she is also allowed to work in harbors with dangerous goods. Equipped with a renovated mechanical crane on a slewing ring with a lifting capacity of 2,5 metric tons. This makes it a multi-purpose ship with a 400 liter dredger grab, 560 kg pile driver with pile cap, 2x 11 meter long steel pile guides and a wire winch with 4 wire drums on the rear of the working deck powered by an under deck standing Güldner diesel which can also be used for the anchors or for hoisting via the bow roller. Below deck there is a lot of storage space and a workbench. In our view, an all-rounder for wet contractors or for ships repair.

General information

Yard:	Shipyard Van der Werff, NL-Leeuwarden
Rebuilt year:	2005
Hull shape:	flatbottom
	hard chine
Hull material:	steel
Deck material:	steel
Superstructure material:	steel
Construction method:	riveted
	new steel is welded
	rubbing strake
	2 watertight bulkhead(s)
	Sturdy, heavily constructed
Steering system:	mechanical
	wheel
	fish tail rudder
Windows:	aluminium portholes
	rubber window frames
	hardwood outside doors
Displacement (approx.):	69,154 m3 maximum allowable displacement
	55,122 m3 displacement in empty condition
	14,032 m3 displacement
Airdraft (approx.):	3,20 m
	everything down
Owner:	Dutch owner
Registration:	Dutch registered
	B-registered
	Costs for the change of ownership and / eventually deletion are for purchasers amount.
Colour / Paint System:	black hull
	yellow bulwark
	yellow superstructure
	& white superstructure
	last underwater treatment 03-2019
Certificates:	inland waterways certificated (TRI WV / ES-TRIN)
	zone 2 Netherlands
	zone 3
	zone 4
	Waal, Lek & NL Rhine
	valid until: 04-2026
	ADN valid until: 04-2024
Suitable for / as:	commercial shipping
	inland waterways
Additional information:	The techniques used on board are commercial shipping quality.
	pushing bow
	Underwater treatment is fully double plated.
	Hull shape is suitable for drying out.
	Great vessel for cruising on the European canals and rivers.
	Great vessel for cruising on the French canals and rivers.

Technical information

Enginepower:	158 Hp
	116 kW
Engine brand:	DAF
Revolutions:	1800 RPM
Engine model:	DKA 1160A
Number of cylinders:	6
Overhaul engine:	2009 reconditioned installed
Running hours (approx.):	2500/3000
Fuel:	diesel
Fuel tank (approx.):	2x 500 litre
	steel tank(s)
	BOBS overflowing fuel safety system
Cooling system:	closed
	box cooler
Propulsion:	3 blade propeller
	greased lubrication of propeller shaft
Gearbox:	Masson NF3 hydraulic
	reduction/ratio 3:1
Heating:	Maritiem Booster central heating
	on diesel
Electricity system:	12 / 24 / 230 / 400 Volt
	400 Volt shore power connection
Batteries:	2x 230 Ah starter batterie(s) /
	domestic batterie(s)
	1x starter batterie(s) generator
	1x starter batterie(s) auxiliary engine
	1x 120 Ah starter batterie(s) crane
Battery charger:	1x Deca Smart 1222 battery charger
	CTEK MXS 7.0 battery charger 12/7
	Victron Blue Power battery charger 12/7
Genny:	Mosa GE 35 YSX whisper set (2013)
	38 kVA 230/400 Volt
	1500 RPM
	3000 on the hour counter (approx.)
Inverter:	Victron Phoenix inverter 24/750
Water pressure system:	seawater hydrophore pump
Bilge pump:	general service pump
	400 Volt
Deck wash pump:	present
	400 Volt
Gas system:	bottlebox
Additional information:	Creemers air compressor
	Güldner auxiliary diesel engine

Accommodation

Toilet / Heads:	flush toilet
Microwave:	present
Fridge / Refrigerator:	Severin fridge / refrigerator
Entertainment:	radio/CD player
Headroom (approx.):	wheelhouse (approx.) 1,92 m

Navigation equipment

Navigation equipment:	ICOM IC-M401E VHF
	Sailor RT6248 VHF
	rudder indicator
	search light
	horn
	blue board with oscillating light
	tachograph
	camera system
	2x window wiper
	navigation lights
	flashing light
	CNS VDL6000 Automatic Identification System (AIS)
	horn

Rigging and sails

Mast:	lantern mast
	steel
Lowerable:	yes
	manual

Equipment

Anchor equipment:	Forward:
	Pool anchor
	anchor cable
	& Aft:
	Pool anchor
	anchor cable
	draadlier met 4 trommels via hulpmotor / wire winch with 4 drums via auxiliary motor / Drahtwinde mit 4 Trommeln über Hilfsmotor / treuil à câble avec 4 tambours via moteur auxiliaire
	& Forward:
	spudleg / pole
	6,00 m under the bottom
	specified length(s) is/are approximate
Boarding ladder:	present (voor duiken / for diving / zum Tauchen / pour la plongée)
Dinghy:	present
Safety:	fire extinguishers
	life buoys
	according to the certification requirements

Additional information:	deck lights
	PowCon welding machine
	O&K LS041 crane